



NAN TOWN MUNICIPALITY

PROJECT FOR PROMOTING SUSTAINABILITY IN FUTURE CITY OF THAILAND



SFC CONCEPT



SUSTAINABLE FUTURE CITY INITIATIVE (SFCI)

The National Economic and Social Development Board (NESDB) and the Japan International Cooperation Agency (JICA) started The Project for Promoting Sustainability in Future Cities of Thailand (TFCP) in August 2015 to promote sustainable urban development of local cities of Thailand. Together with NESDB and JICA, the TFCP Team established the Sustainable Future City (SFC) development concept and proposed the Sustainable Future City Initiative (SFCI) as a national government-guided and local-government-driven mechanism to realize the SFC. To examine the SFCI, six model cities were selected to prepare their respective SFC plans and implement SFC projects.



NAN TOWN MUNICIPALITY

“Nan Town Municipality, Nan Province located next to Lao PDR, covers 7.6 km^2 with a population of 20,362 in 2016. The walled city of Nan was founded in 1857 AD on the West bank of the Nan River. In its heart, the Royal Pavilion and Phumin Temple were built as administrative and religious centers of the city. The citadel area of Nan was registered to be an old town conservation area in 2005.

The town has expanded beyond its original boundaries and is rapidly becoming a popular tourist destination. This is due to its historical architecture, unique culture and natural beauty that gives the town a relaxing and tranquil feel. Over the last decade, town expansion and increased tourist numbers have increased waste and pollution. To mitigate the environmental impact, Nan requires comprehensive planning for sustainable development for future generations.

SUSTAINABILITY ASSESSMENT

01

Maintenance/conservation of historical & cultural heritage and cleaner town is important to attract more tourists all year round.

02

The increase job opportunities from tourism and agricultural diversity can mitigate the problem of youth migration.

03

Improving basic infrastructure and more data based approach with enforcement of rules & regulations in and around Nan are necessary for road safety & promoting the bicycle as a mode of transport, and pollution control.

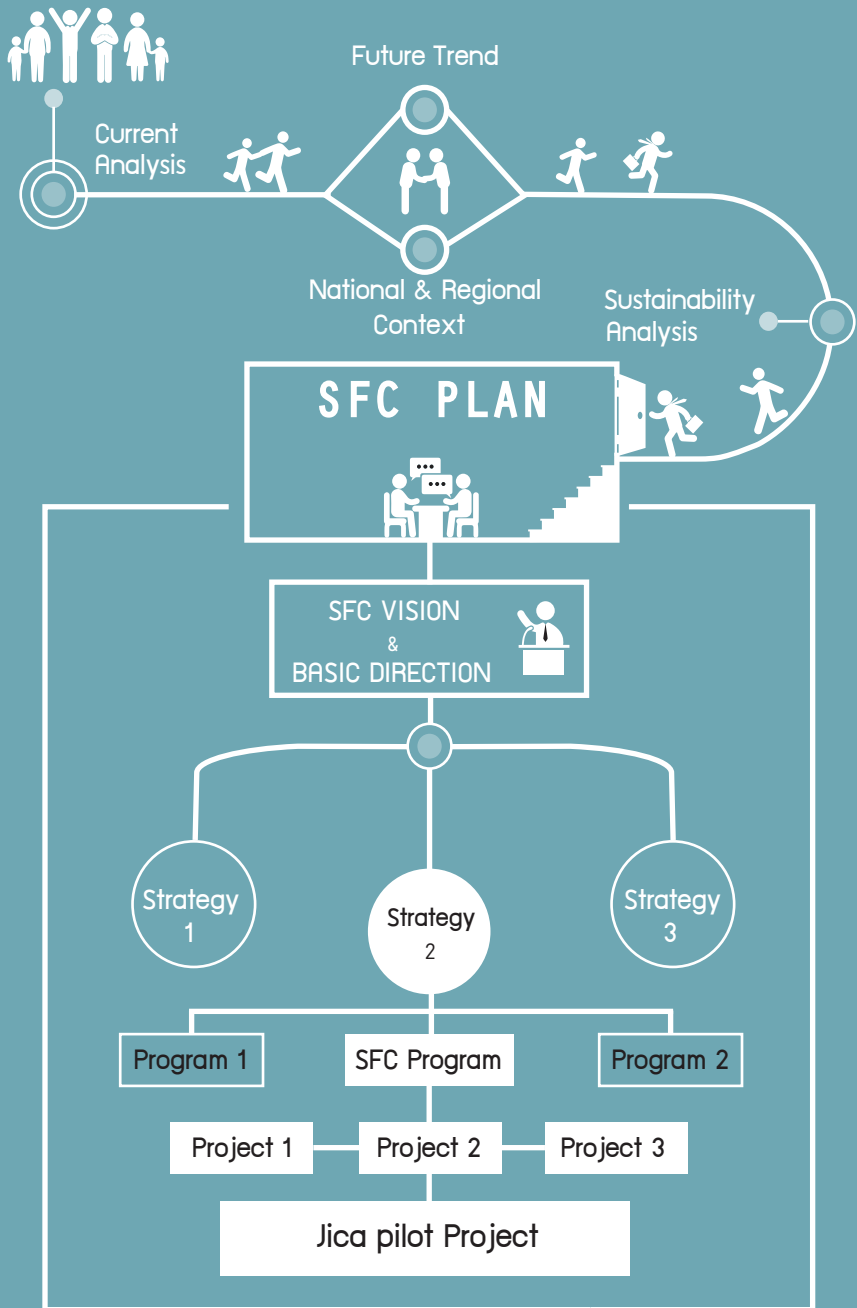
04

The transfer of local wisdom from older generations to younger generations is further promoted to maintain Nan's unique culture & traditions.



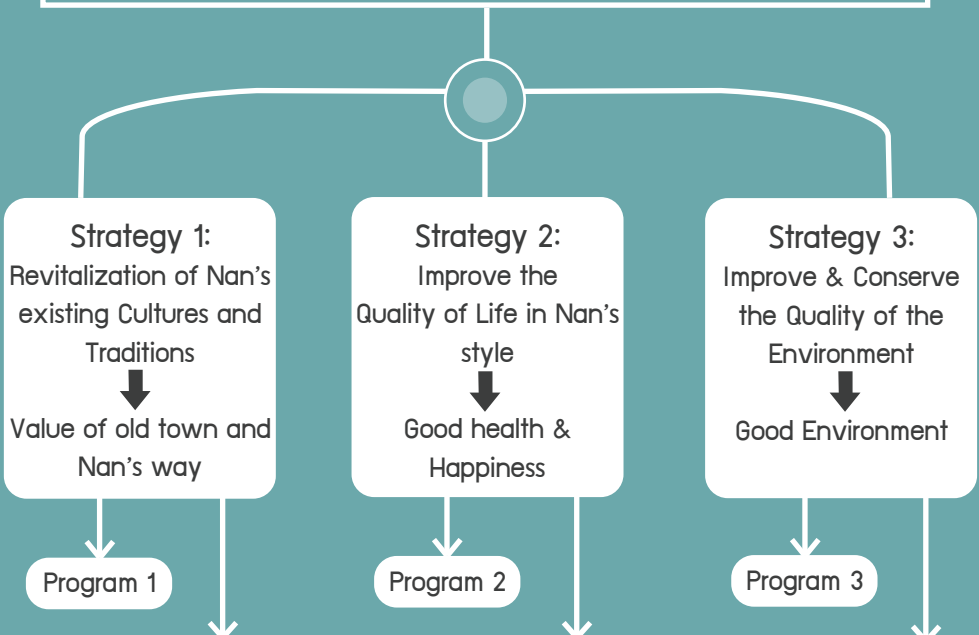
SFCI IMPLEMENTATION FRAMEWORK

Start _ _ _ _ _



SFC PLAN

Vision : NAN-A Happy & Living old Town



SFC Plan : Nan-The Living Old Town

1. Improving the attractiveness of Old Town along the Bicycle Route
2. Lighting for historical area to enjoy the beauty of Nan at night
3. Practical Solid Waste Management by People's Participation

Cleaner Nan

- Conserve traditional Architecture by giving knowledge & ownership to locals and tourists. Setting the Rules & Regulations to conserve the old houses/buildings and control the style of new constructions.
- Promote the safe living & society by setting up policies, regulation and rules.
- Setup sustainable solid waste management

Greener Nan

- Conserve old trees and increase green area both in public & residential area.
- List of conserved & traditional trees and ensure the Arborists are trained.

Healthier Nan

- Promote clean food production & marketing.
- Promote local wisdom e.g. Herbal Medicine and Treatment Center, etc.
- Promote better health by exercise, cycling, traditional dancing and improve infrastructure for exercise

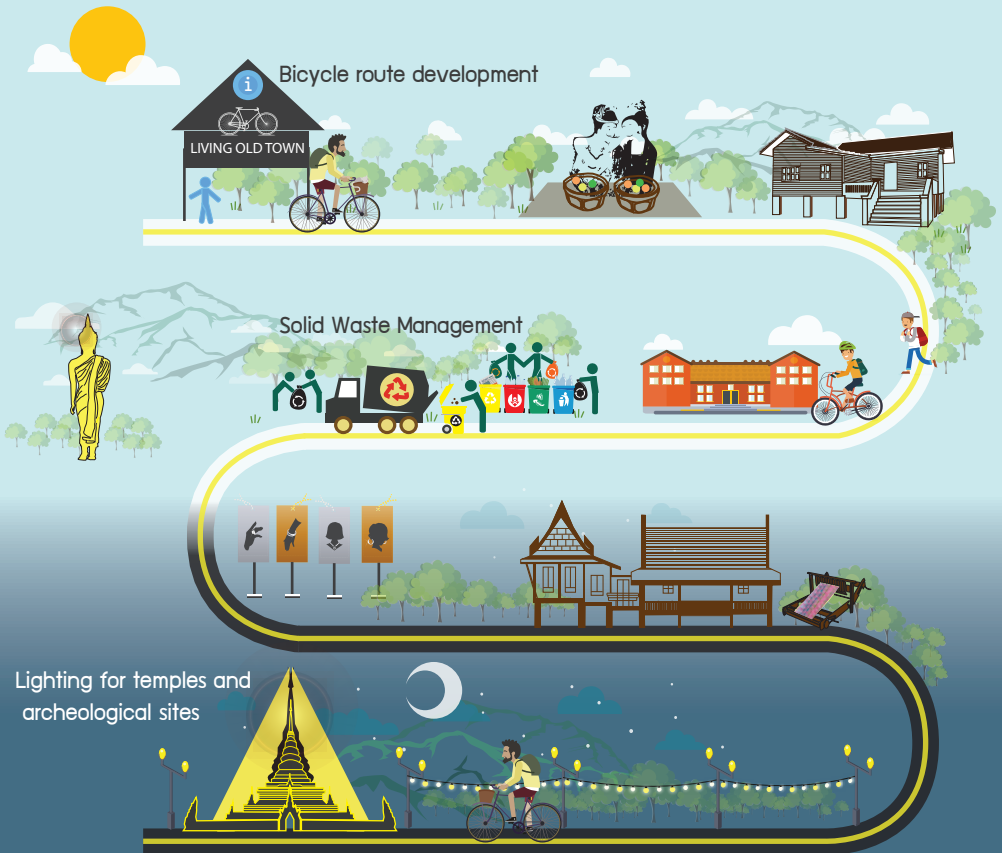
JICA PILOT PROJECT

Experience Nan – the Living Old Town along the Bicycle Route

“The cross-cutting element of all three Strategies focusing on both locals and tourists needs”



- 1) To improve links between attractive points in the town, not physically establishing bicycle routes. The Nan Community Center for Cultural and Cycle Tourism or the “Long Nan Center” will be established as a gateway for community and bicycle tourism.
- 2) Atmospheric lighting along the route will provide a beautiful and safe night time experience.
- 3) The activities will focus on the value of traditional & unique culture and promote healthy living & awareness of the environment. Strong collaboration among stakeholders will be key for a successful project.



OUTCOME AND IMPACT

Expected output of SFC Program



Experience Nan – The Living
Old Town Along Bicycle Route

© Chiang Mai University



Solid Waste Management



Lighting

© Chulalongkorn University

- Nan – the Living Old Town will make locals proud of their unique traditions, culture and architecture
- Tourists will experience the value of conserving the traditional ways of life & identities and made aware that conservation can go in parallel with development.
- The improved quality of environment by proper solid waste management will bring a healthier lifestyle to locals

Long-term impact of SFC plan

- Nan's perspectives on tourism promotion are to increase quality tourists as well as to harmonize their development with the environment in a rustic traditional manner unique to Nan.
- Nan town municipality will be tourism gateway for Nan Province, and will contribute to enhance the Lanna Culture.
- The vision of “Nan – A Happy and Living Old Town” is further elaborated as the Guideline to utilize for the aim of future developments.



© Chiang Mai University



The Project for Promoting Sustainability in Future Cities of Thailand

CONTACT US

Project office
Office of the National Economic and
Social Development Board [NESDB]
Email: tfcp.mail@gmail.com
Tel: +66-2-628-2879

Nan Town Municipality
Tel: 054 710234
website: www.nancity.go.th